



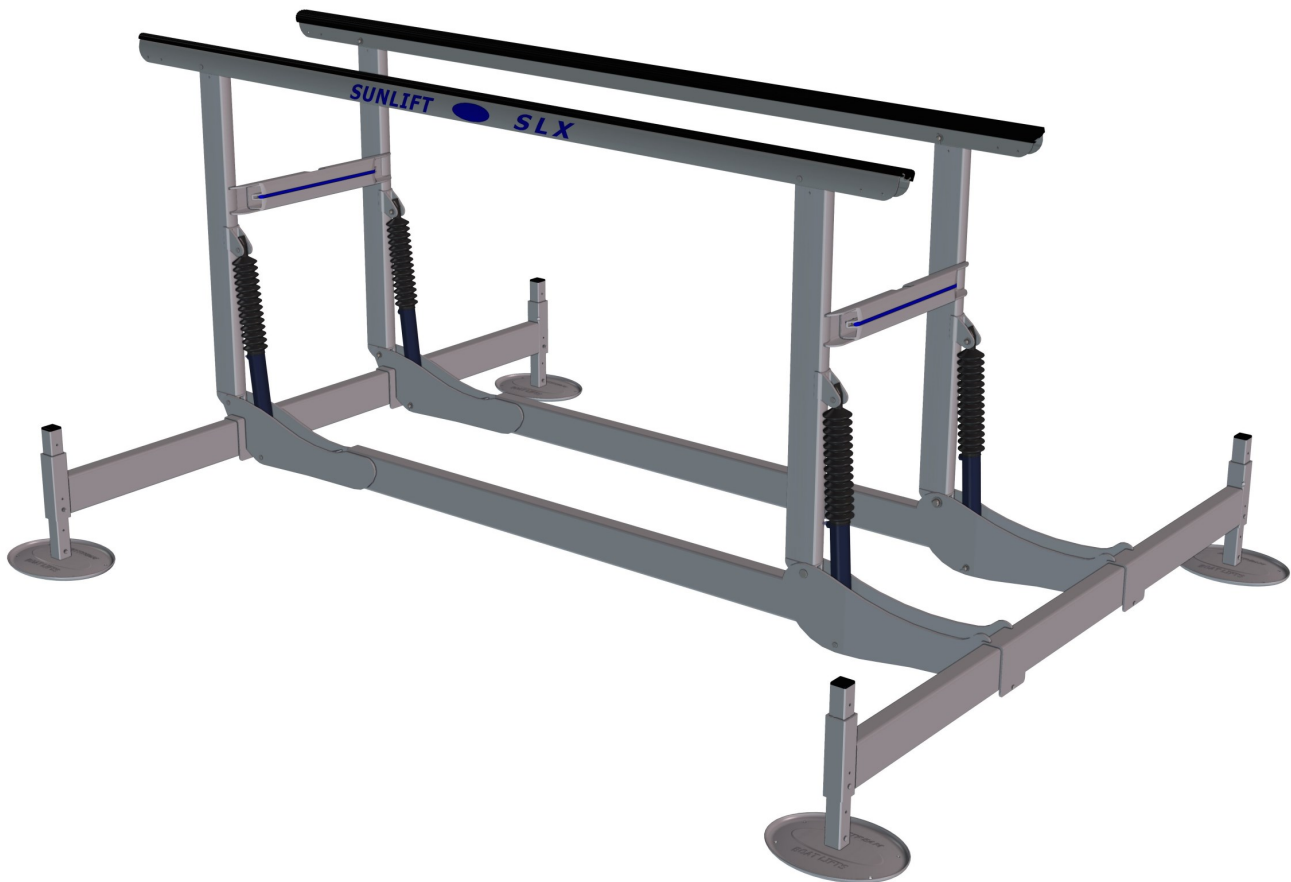
SUNLIFT™

SLX

MODELS

SLX 5010
SLX 6512
SLX 8012
SLX 9012
SLX 10014
SLX 12016

ASSEMBLY, INSTALLATION & USE MANUAL



SLX 10014 SHOWN

READ CAREFULLY, KEEP THESE INSTRUCTIONS

COPYRIGHT SUNSTREAM CORPORATION 2020 - PATENTS PENDING - ALL RIGHTS RESERVED

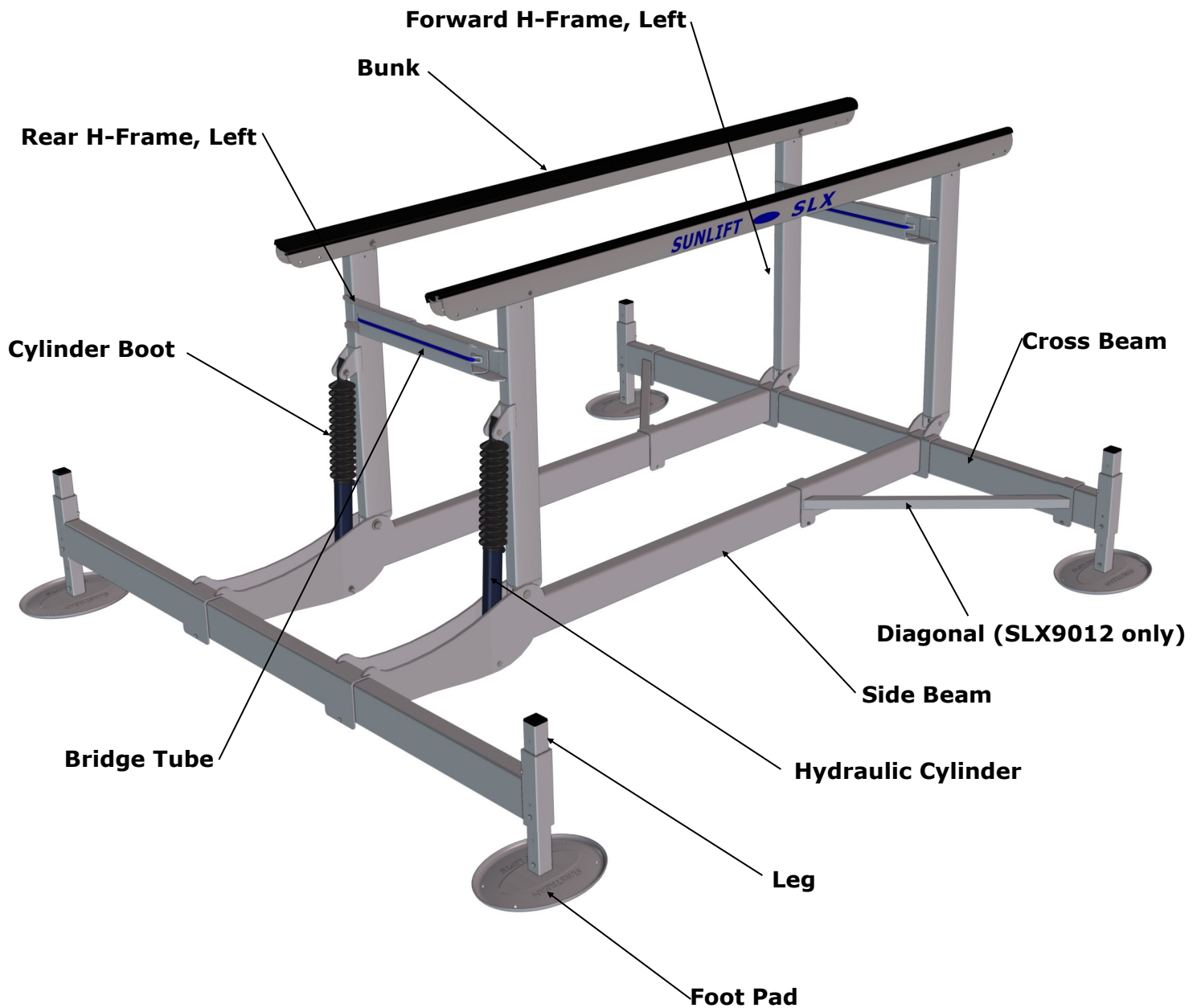
Table of Contents

Overview of SunLifts	3-4
Part Lists	5-7
Sunlift Accessories	8-9
Assembly of Sunlift	10-23
Connecting to Power Pack	24
Completing Assembly	25
Installation	26-27
Use and Maintenance	28
Remote Control	29-30
Troubleshooting	31
Safety	32-34
Warranty	35-36

Overview Of Components

Common 2 cylinder SLX

SLX5010, SLX6512, SLX8012 & SLX9012

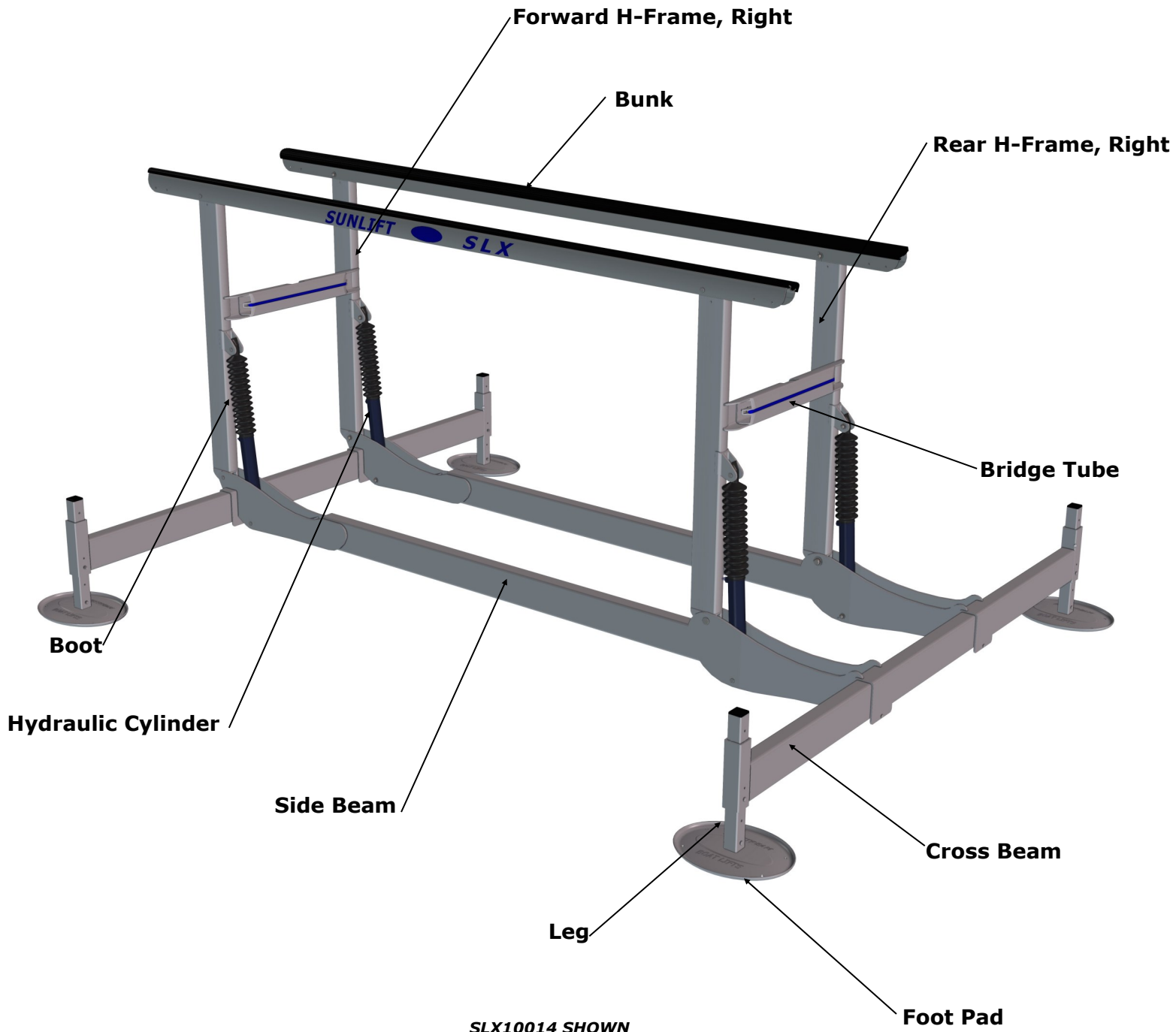


SLX9012 SHOWN

Overview Of Components

Common 4 cylinder SLX

SLX10014 & SLX12016



Parts List

AVAILABLE LEGS	
2 FT (24")	SA-LR2
4 FT (48")	SA-LR4
6 FT (72")	SA-LR6
8 FT (96")	SA-LR8
12 FT (144")	SA-LR12
16 FT (192")	SA-LR16
24 FT (288")	SA-LR24

SLX 5010		
<i>PART</i>	<i>QTY</i>	<i>PART NUMBER</i>
SIDE BEAM	2	952454
CROSS BEAM	2	952452
BUNK	2	942483
BRIDGE TUBE	2	413058
FWD H-FRAME, RIGHT	1	952428
FWD H-FRAME, LEFT	1	952427
REAR H-FRAME, RIGHT	1	952430
REAR H-FRAME, LEFT	1	952429
FOOT PAD	4	433111
LEG	4	*SEE CHART ON PAGE 5
HARDWARE KIT	1	912480
CYLINDER	1	92-000009-73
CYLINDER KIT (INCLUDES, CYLINDER(S), HOSES & FITTINGS)	1	922460
PUMP	1	PS12-32

Parts List

SLX 6512		
PART	QTY	PART NUMBER
SIDE BEAM	2	952453
CROSS BEAM	2	952452
BUNK	2	942484
BRIDGE TUBE	2	413058
FWD H-FRAME, RIGHT	1	952428
FWD H-FRAME, LEFT	1	952427
REAR H-FRAME, RIGHT	1	952430
REAR H-FRAME, LEFT	1	952429
FOOT PAD	4	433111
LEG	4	*SEE CHART ON PAGE 5
HARDWARE KIT	1	912480
CYLINDER	2	92-000009-73
CYLINDER KIT (INCLUDES, CYLINDER(S), HOSES & FITTINGS)	1	922460
PUMP	1	PS12-32

SLX 8012 & SLX 9012		
PART	QTY	PART NUMBER
SIDE BEAM	2	952421
CROSS BEAM	2	952426
BUNK	2	942484
BRIDGE TUBE	2	413058
FWD H-FRAME, RIGHT	1	952428
FWD H-FRAME, LEFT	1	952427
REAR H-FRAME, RIGHT	1	952430
REAR H-FRAME, LEFT	1	952429
FOOT PAD	4	433111
DIAGONAL (SLX 9012)	2	952493
LEG	4	*SEE CHART ON PAGE 5
HARDWARE KIT	1	912481
CYLINDER	4	92-000009-73
CYLINDER KIT	1	922460
(INCLUDES, CYLINDER(S), HOSES & FITTINGS)	1	
PUMP	1	SLX8012: PS12-32 SLX9012: PS12-40

Parts List

SLX 10014		
PART	QTY	PART NUMBER
SIDE BEAM	2	952422
CROSS BEAM	2	952426
BUNK	2	942485
BRIDGE TUBE	2	413058
FWD H-FRAME, RIGHT	1	952432
FWD H-FRAME, LEFT	1	952431
REAR H-FRAME, RIGHT	1	952478
REAR H-FRAME, LEFT	1	952477
FOOT PAD	4	433111
LEG	4	*SEE CHART ON PAGE 5
HARDWARE KIT	1	912482
CYLINDER	4	92-000009-73
CYLINDER KIT (INCLUDES, CYLINDER(S), HOSES & FITTINGS)	1	922461
PUMP	1	PS12-32

SLX 12016		
PART	QTY	PART NUMBER
SIDE BEAM	2	952423
CROSS BEAM	2	952426
BUNK	2	942486
BRIDGE TUBE	2	413058
FWD H-FRAME, RIGHT	1	952432
FWD H-FRAME, LEFT	1	952431
REAR H-FRAME, RIGHT	1	952478
REAR H-FRAME, LEFT	1	952477
FOOT PAD	4	433111
LEG	4	*SEE CHART ON PAGE 5
HARDWARE KIT	1	912482
CYLINDER	4	92-000009-73
CYLINDER KIT (INCLUDES, CYLINDER(S), HOSES & FITTINGS)	1	922461
PUMP	1	PS12-40

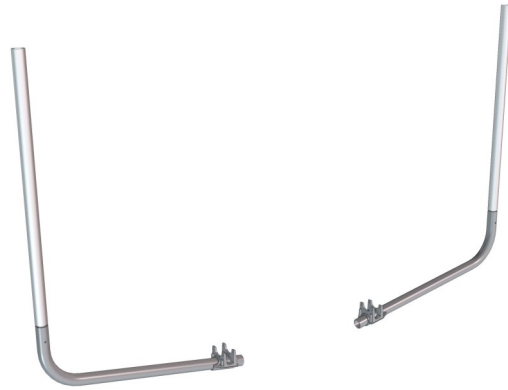
Popular Accessories

GUIDE-ONS

ACTS AS A VISUAL GUIDE FOR EASIER
BOAT LOADING. (ONE PAIR)

PART # SA-GOA5

PART # SA-GOA6



BOW STOP

ACTS AS A BUMP STOP FOR YOUR BOATS
BOW SO IT ISN'T LOADED TOO FAR FOR-
WARD

PART # SA-BS1

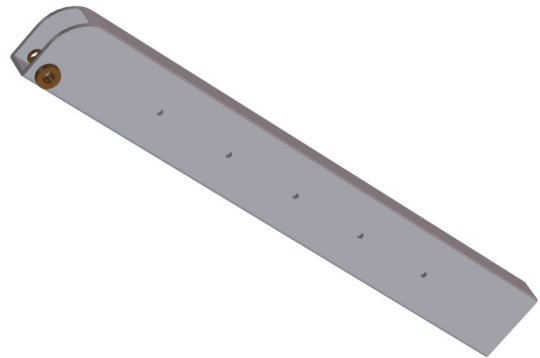


ADJUSTABLE RANGE INSERTS

RAISES H-FRAME/BUNK HEIGHT FOR HIGHER
WATER LEVEL FLUCTUATION AREAS. (SET OF 4)

PART # SA-AR18 (18")

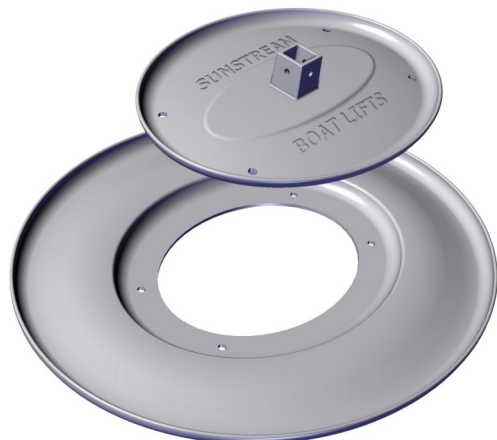
SA-AR30 (30")



SUPER BIG FOOT:

MORE THAN DOUBLES YOUR FOOT-PRINT SIZE FOR
MUDDY APPLICATIONS. (SET OF 4)

PART # SA-bfx1



Other Accessories

Four Button transmitter: LA-RCT4B

Motor Stop, guide-ons required: LA-MS6

Motor Stop, guide-ons not required: LA-MS6NK

Universal LED lights: LA-LP1

Cat Walk brackets (Uprights and Hardware): SA-CW1

Dock Mounted Powerpack Shelf: SA-PSD1

Leg Mounted Powerpack (includes upright): SA-PSL1

Guide-on Stiffener Pair (12ft bunk only): SA-GS12

Zinc Kit: SA-ZNC2

5ft Hydraulic Hose extension (pair): SA-HX51

15ft Hydraulic Hose extension (pair): SA-HX151

30ft Hydraulic Hose extension (pair): SA-HX301

Guide-on Pads (36" black): SA-GP36B

Translating Load Guides: SA-LGT2

Contact your local dealer or Sunstream for more information regarding accessories.

Assembly

If you have any questions during the assembly process, please call your local dealer or Sunstream

CAUTION

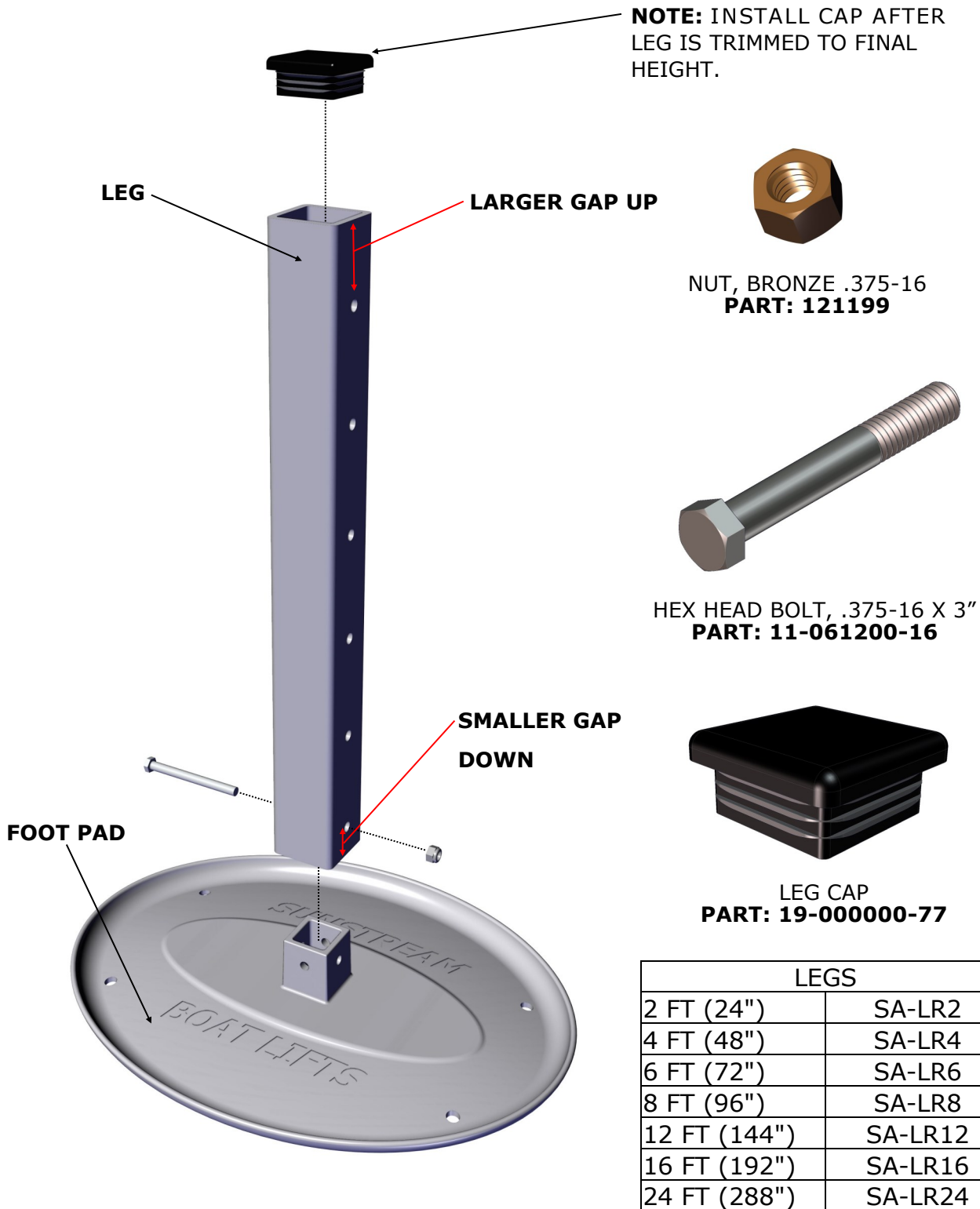
Before beginning assembly, find a nice flat area with room to work to set up your lift. Read ahead to the Installation Procedure to determine the best location to start. Assembly will require the following tools:

1. Wrenches, adjustable wrenches and/or socket wrenches (9/16") & (3/4")
2. Marine Grease (for stainless pivot pins)
3. Needle nose Pliers (for cotter pins)
4. Mallet
5. Measuring tape (for locating side beams on cross beams).



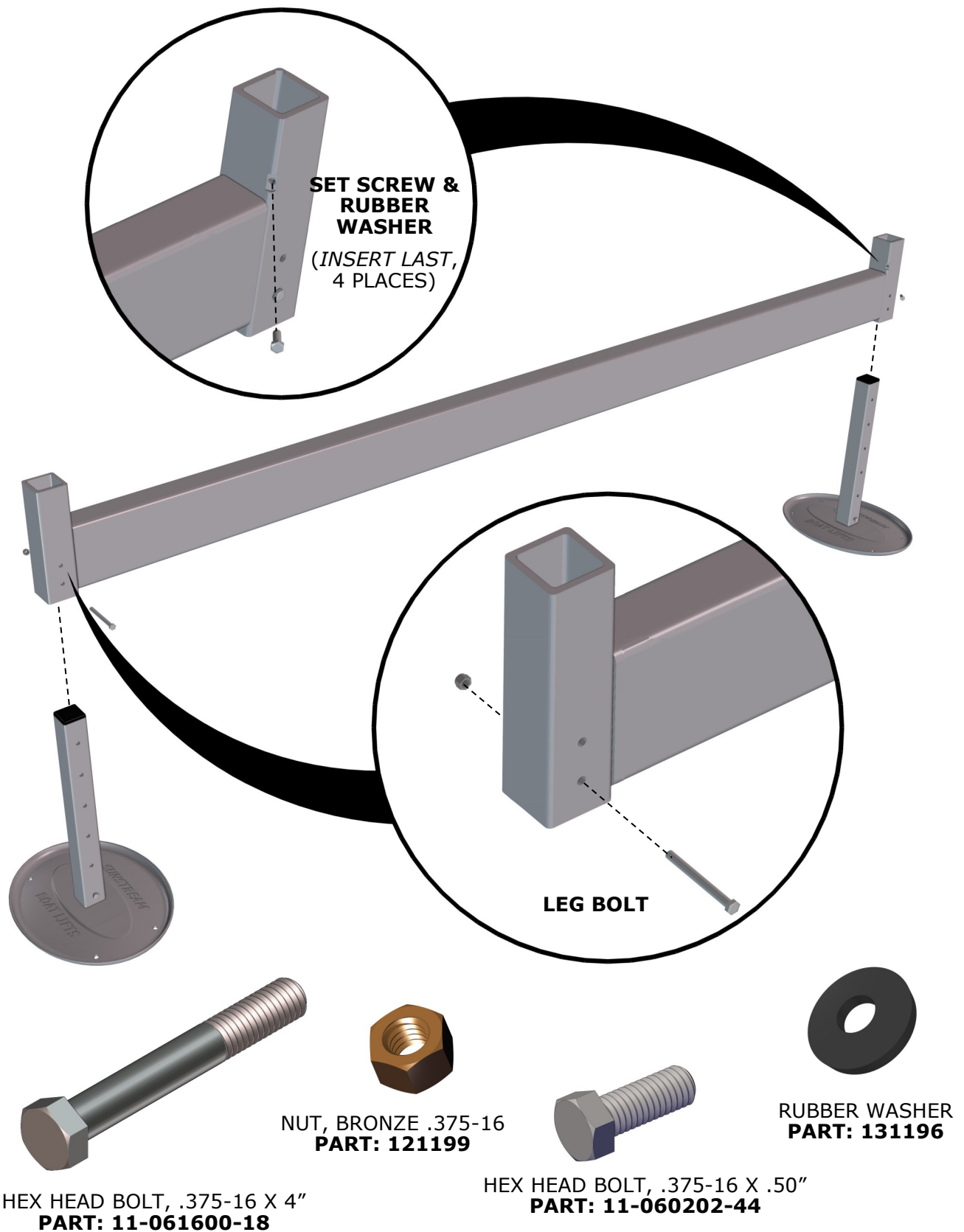
Step 1

Legs and feet



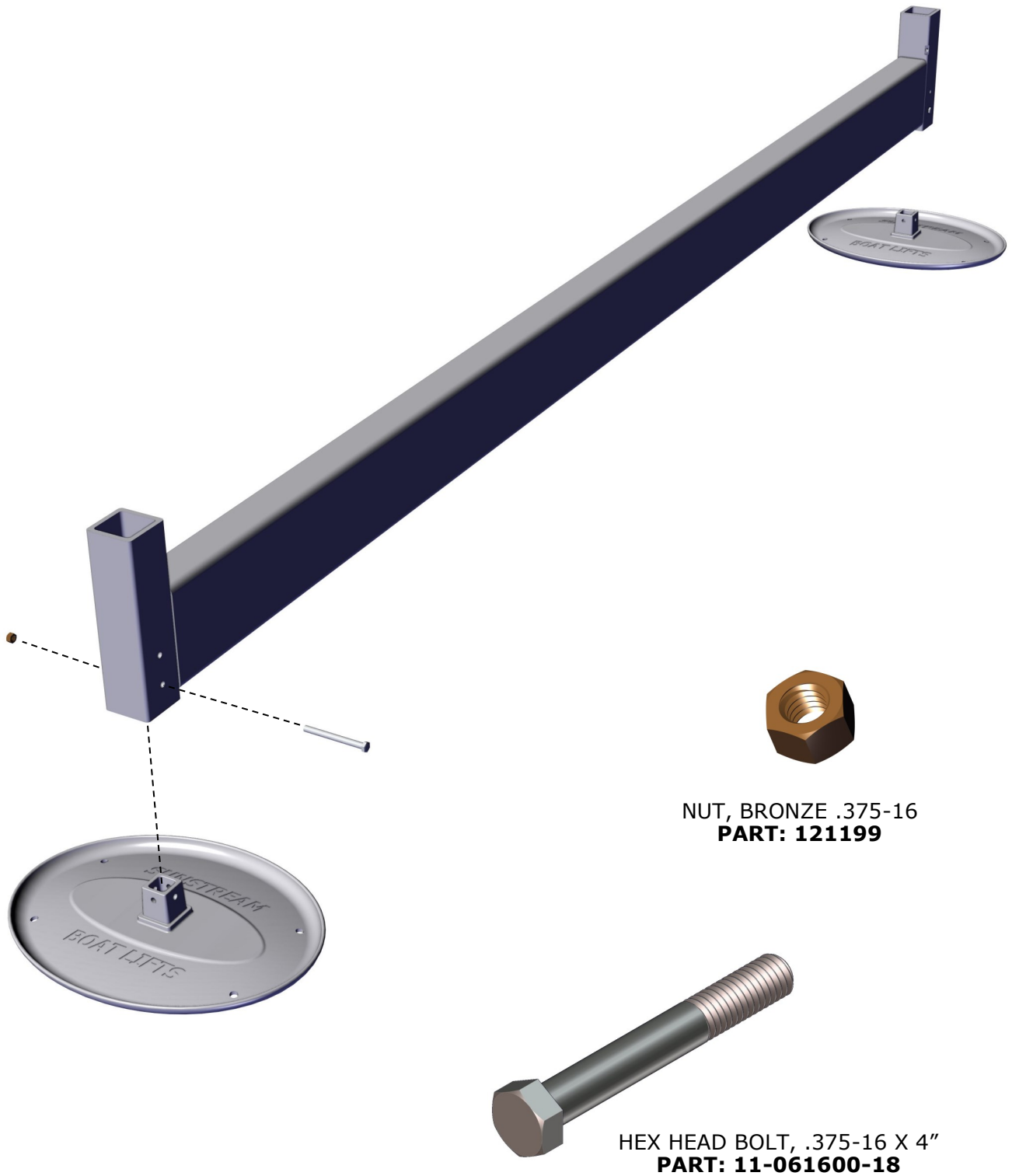
Step 2

Legs and crossbeam



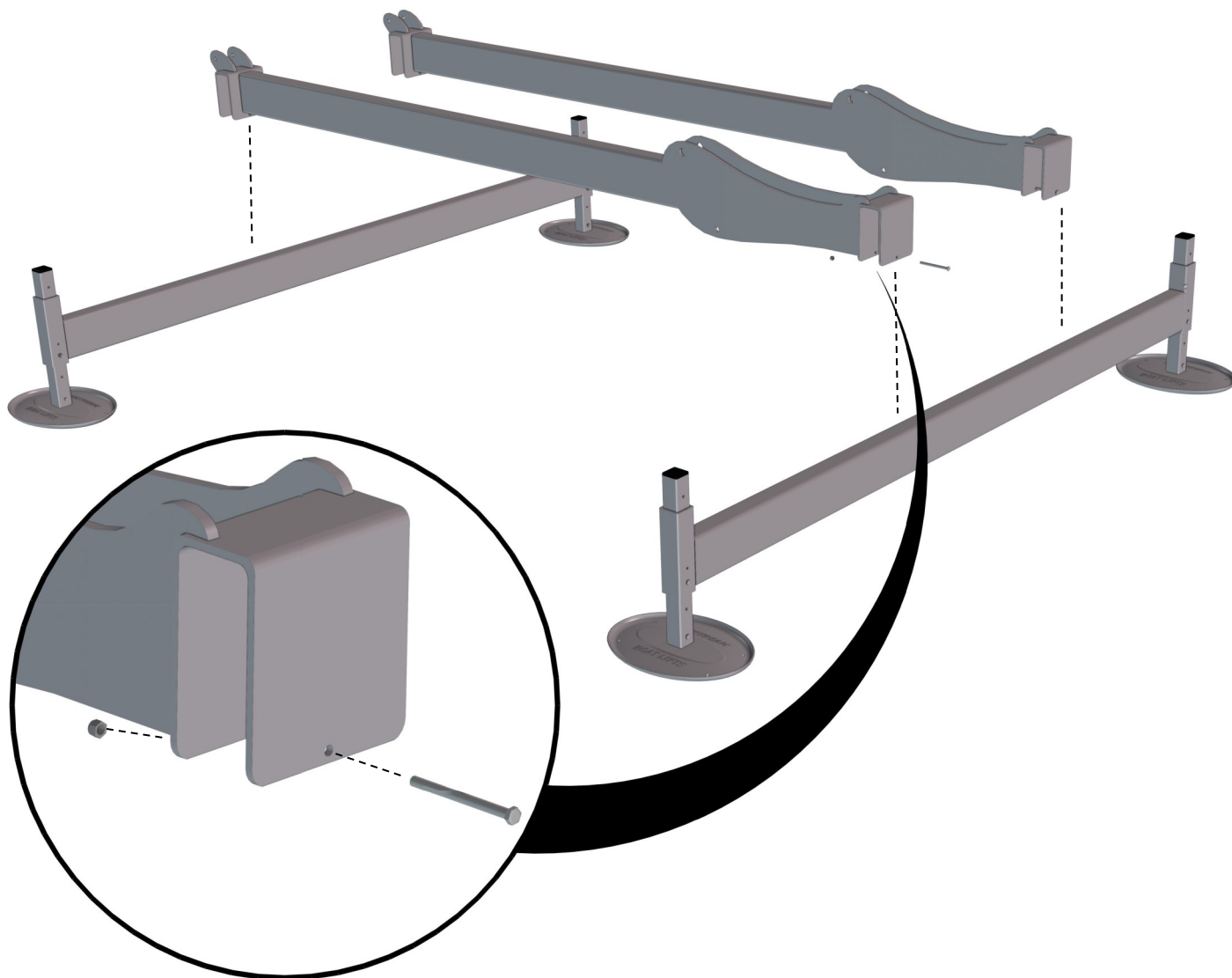
Step 2 continued

Optional direct foot install for shallow water

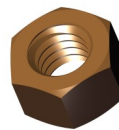


Step 3

Sidebeams and Crossbeams

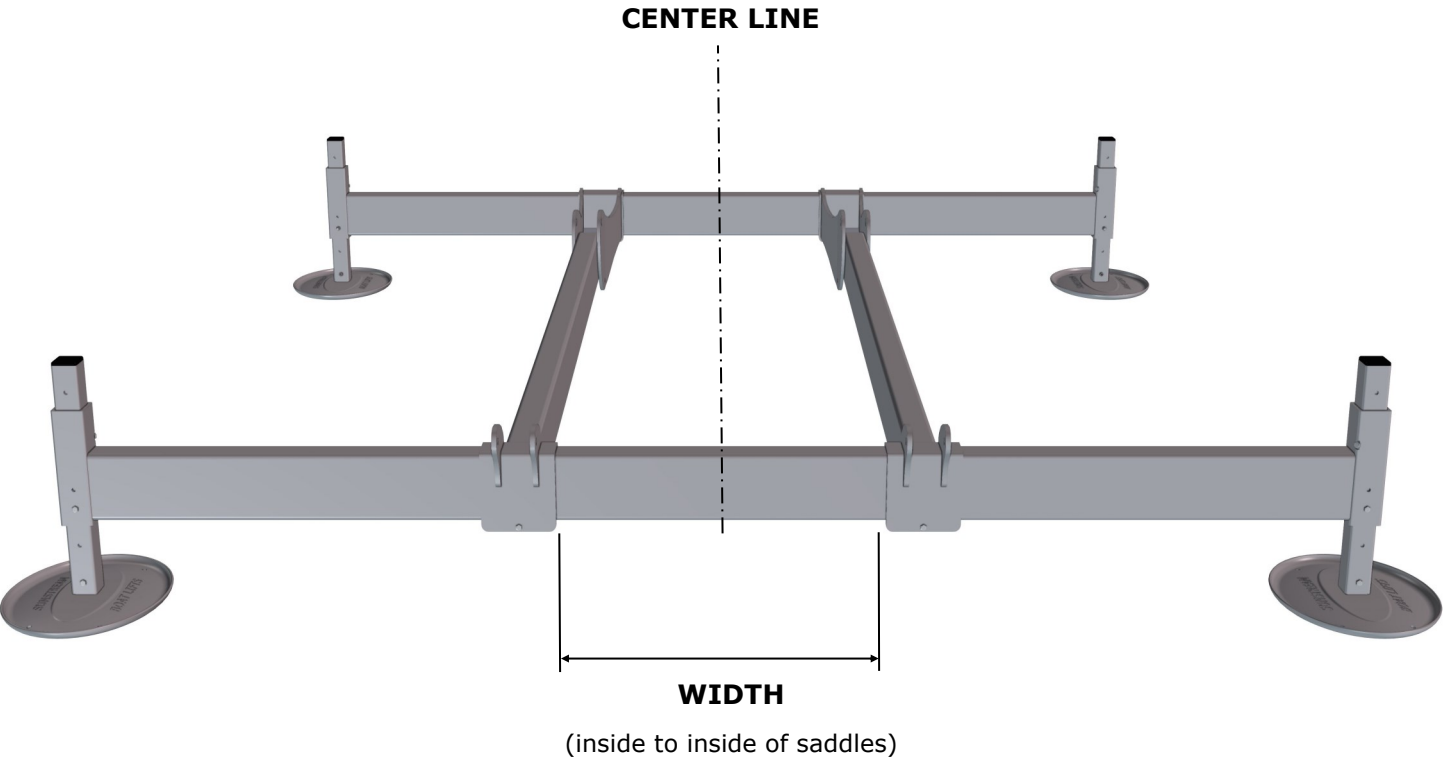


HEX HEAD BOLT, .375-16 X 4.5"
PART: 11-061800-19



NUT, BRONZE .375-16
PART: 121199

Step 3 continued

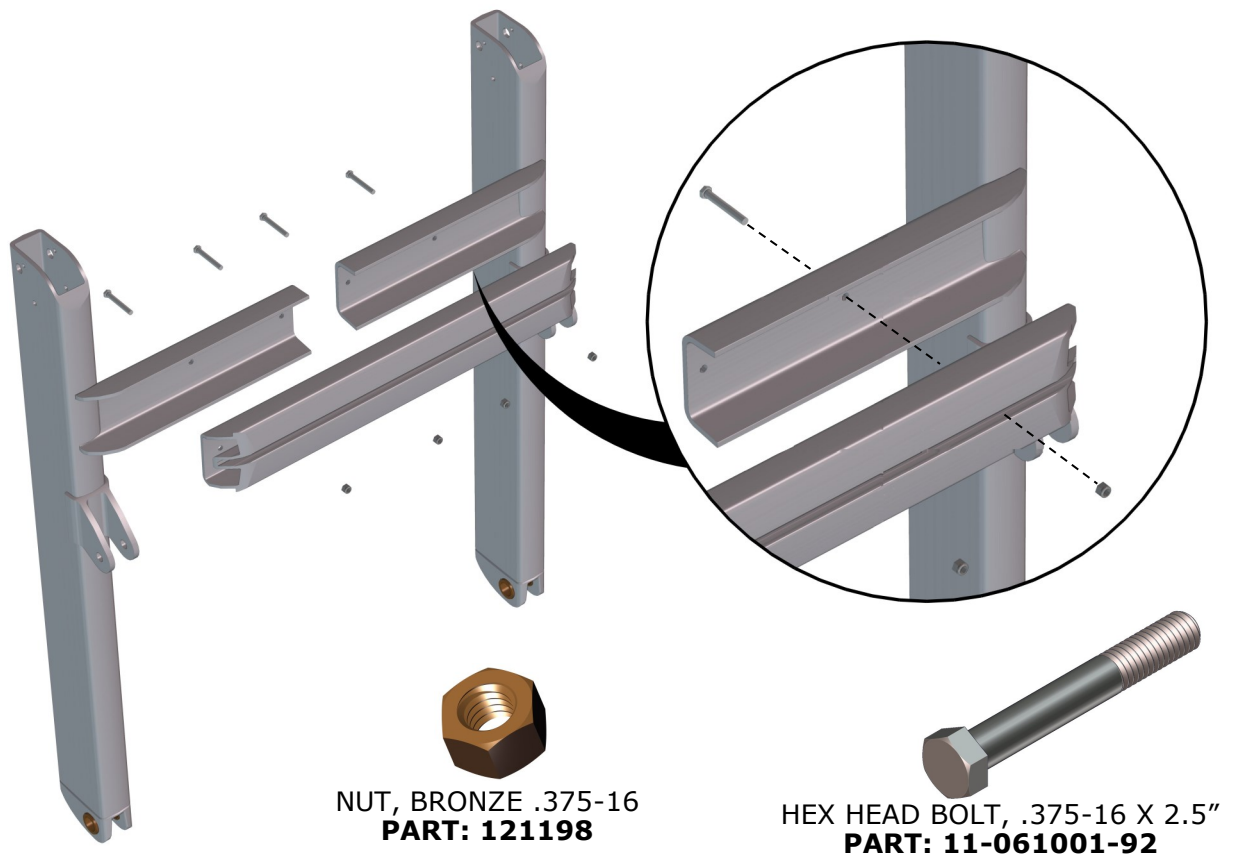
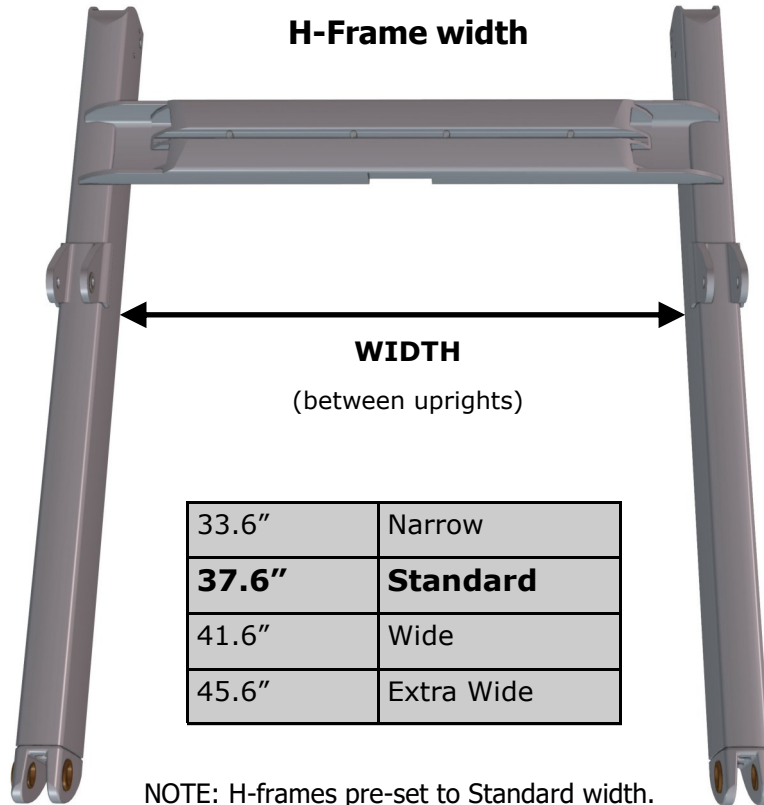


29.0"	Narrow
33.0"	Standard
37.0"	Wide
41.0"	Extra Wide

NOTE: For easier adjusting of side beams, apply grease on top and inside of saddles.

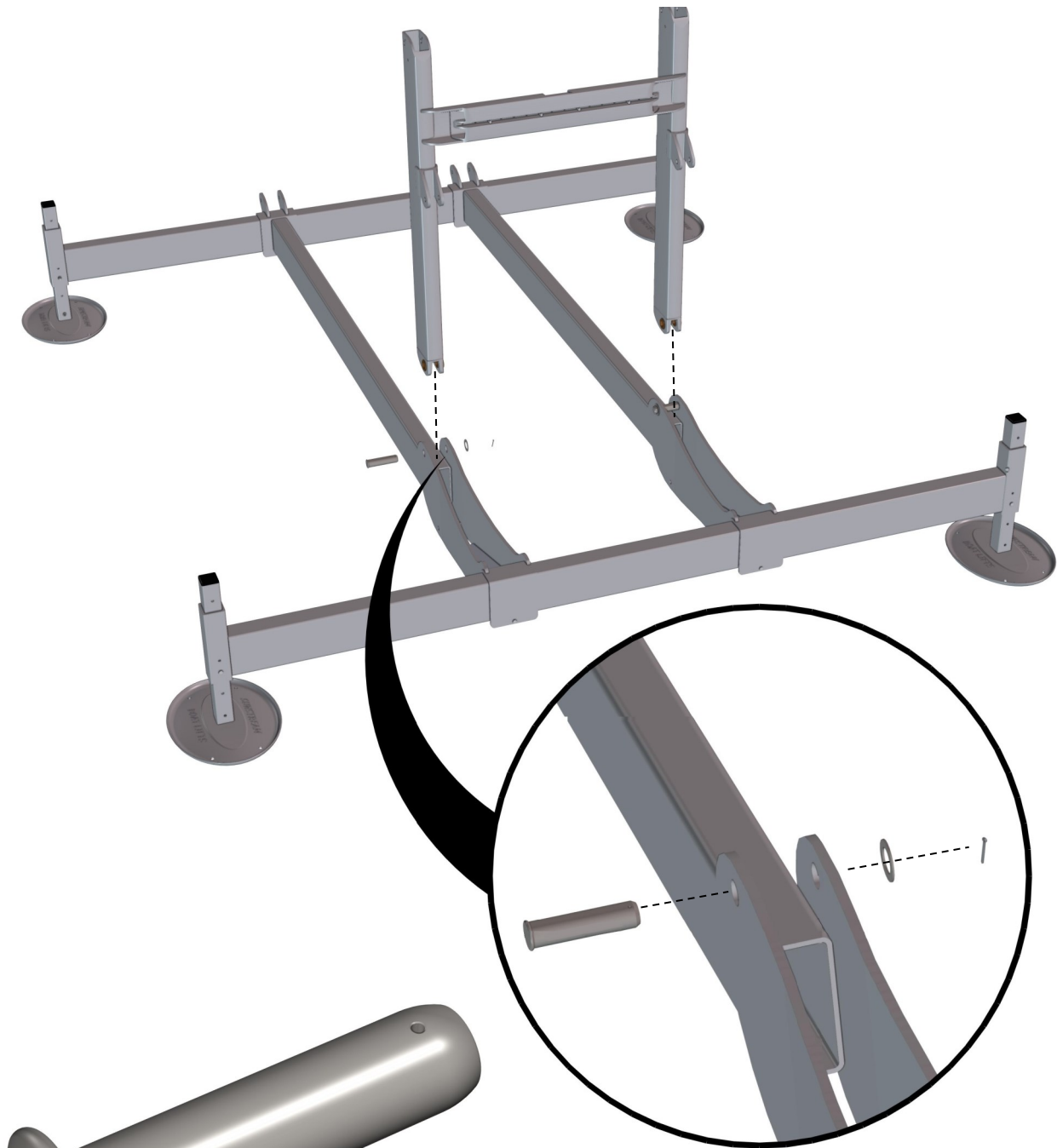
Step 4

H-Frame width



Step 5

Rear H-Frame



APPLY MARINE GREASE TO ALL PINS

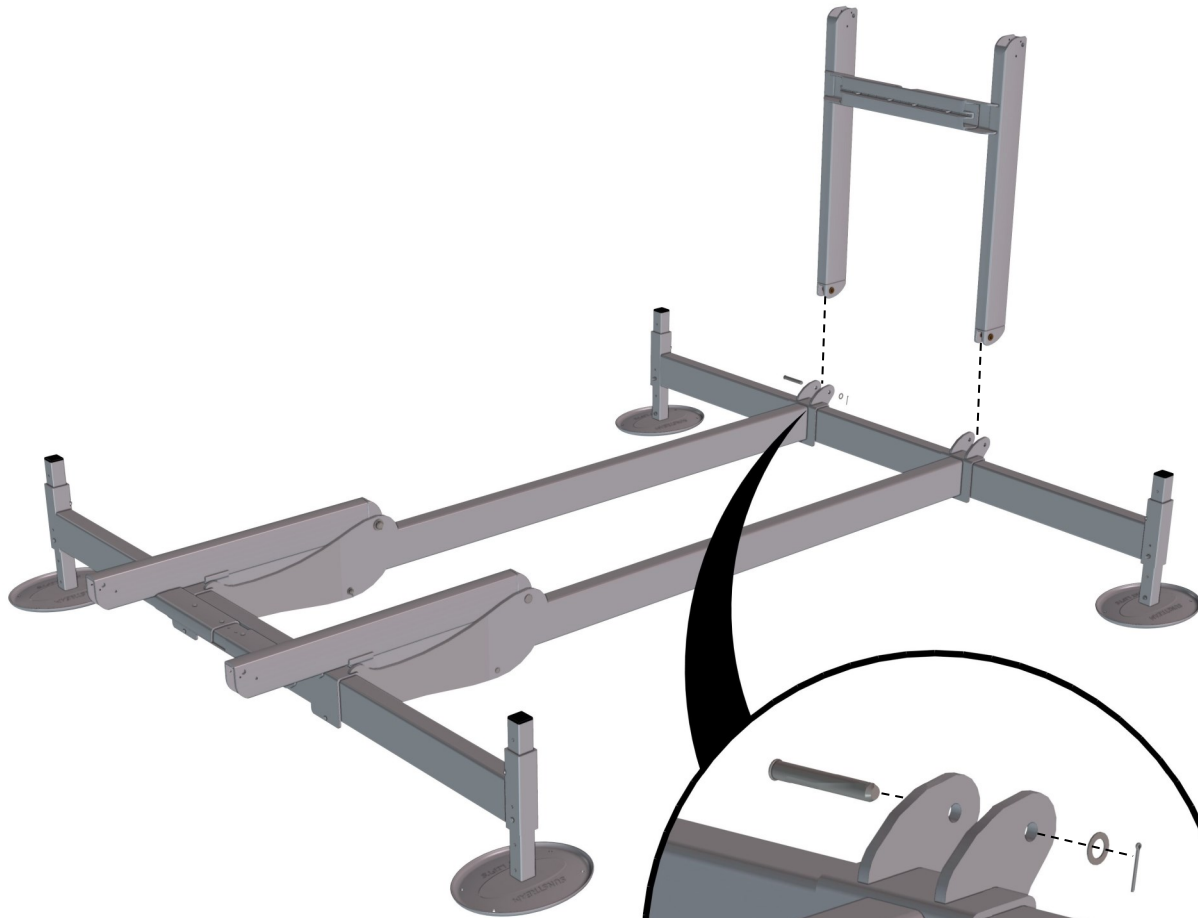
HEADED PIN 1.25" X 5"
PART: 141189

COTTER PIN 2"
PART: 141197

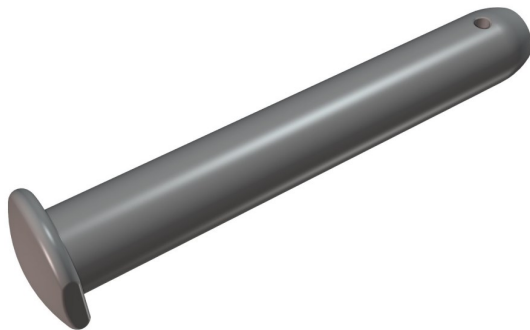
1.25" STAINLESS WASHER
PART: 131195

Step 6

Forward H-Frame (2 Cylinder Lift)



APPLY MARINE GREASE TO ALL PINS



HEADED PIN .75" X 4.88"
PART: 141190

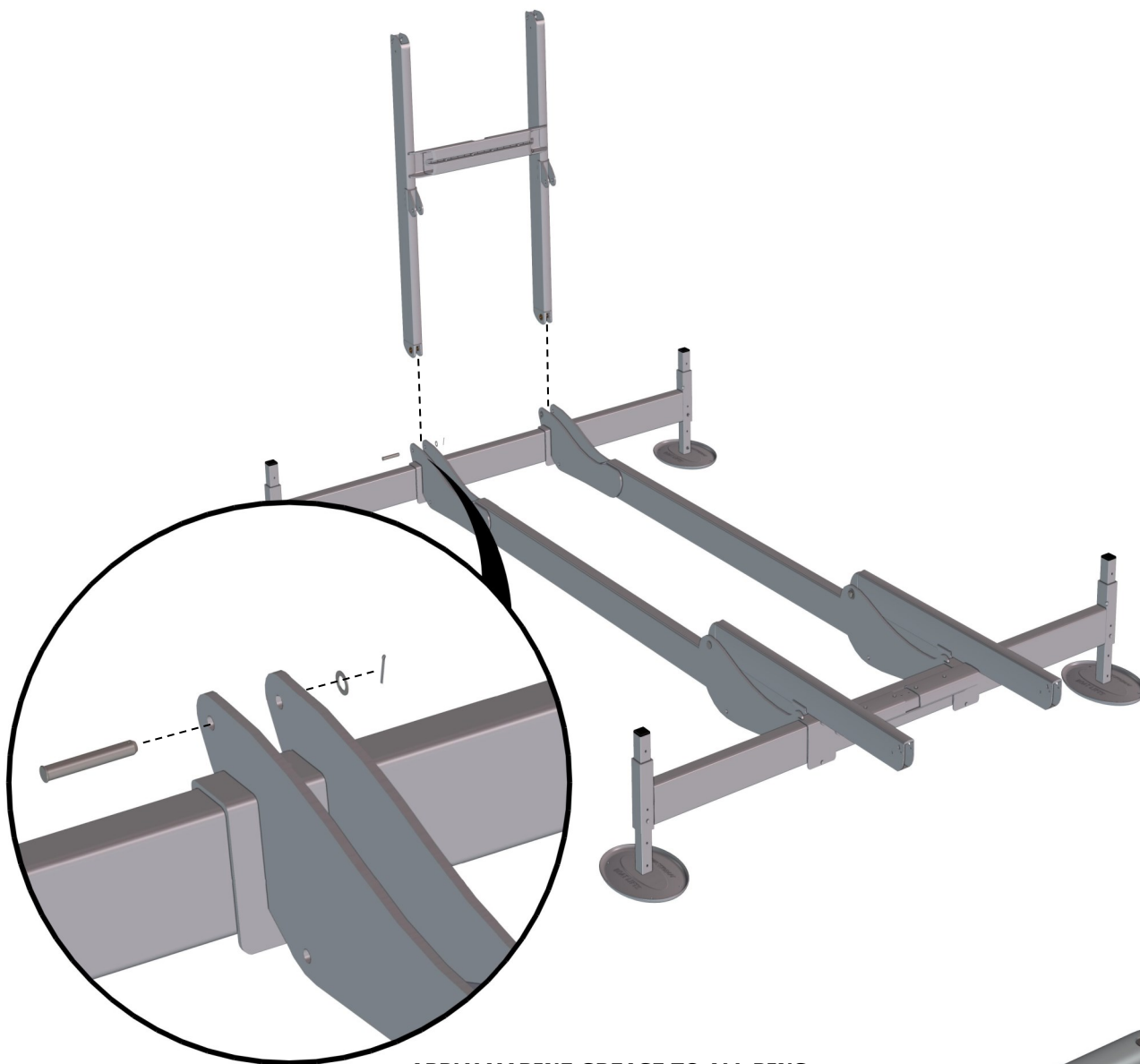


COTTER PIN 1.5"
PART: 14-000001-44



.75" STAINLESS WASHER
PART: 13-120000-59

Step 6 continued (4 Cylinder Lift)



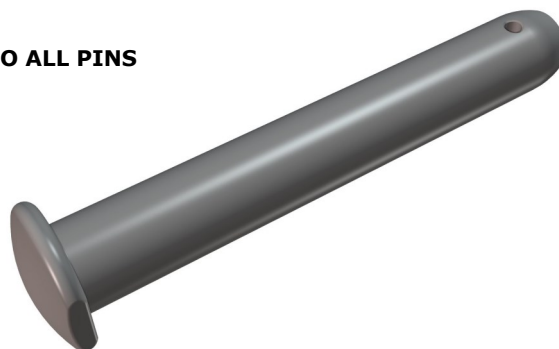
APPLY MARINE GREASE TO ALL PINS



**.75" STAINLESS WASHER
PART: 13-120000-59**



**COTTER PIN 1.5"
PART: 14-000001-44**

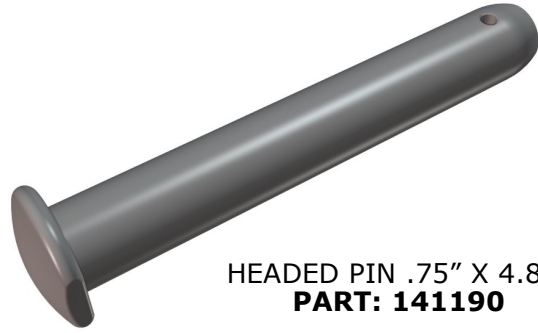


**HEADED PIN .75" X 4.88"
PART: 141190**

Step 7



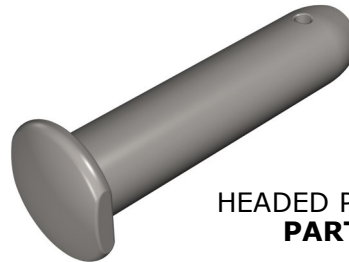
.75" STAINLESS WASHER
PART: 13-120000-59



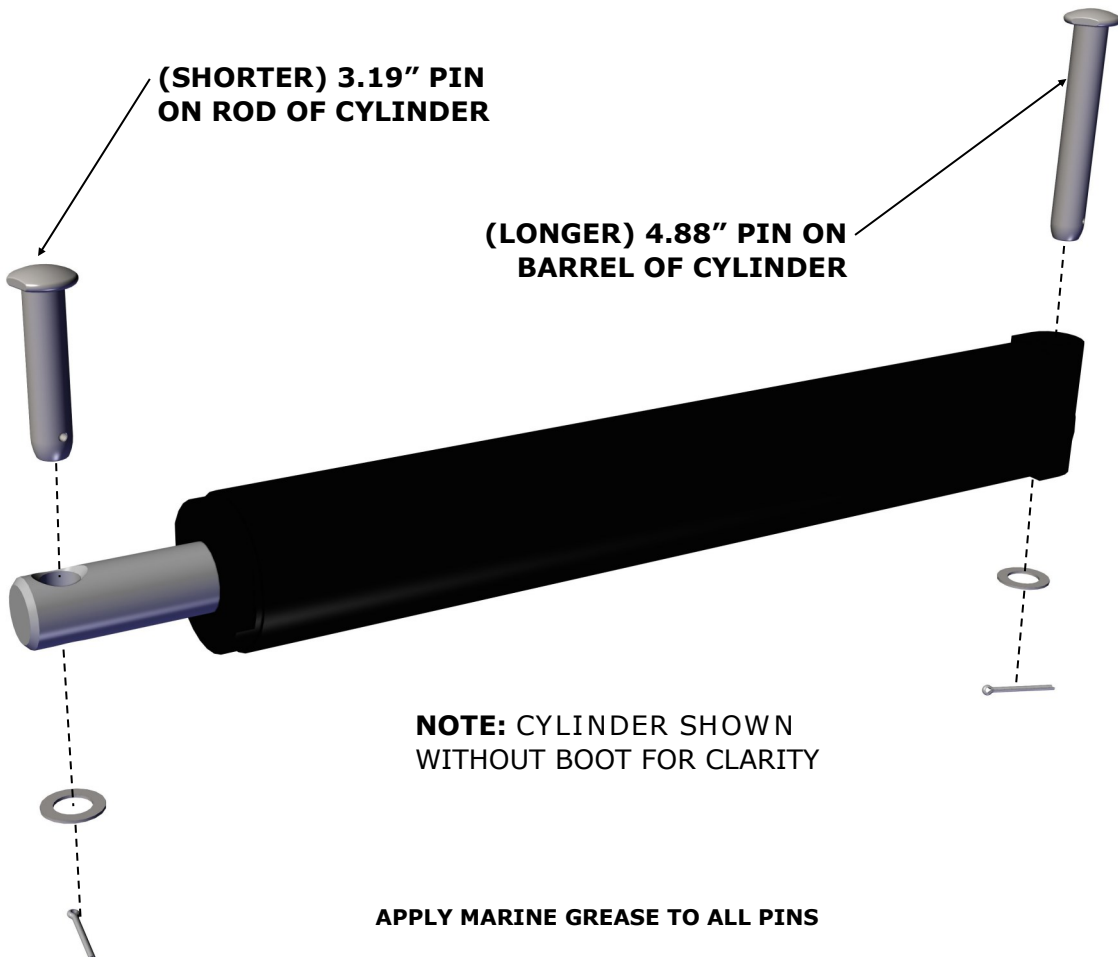
HEADED PIN .75" X 4.88"
PART: 141190



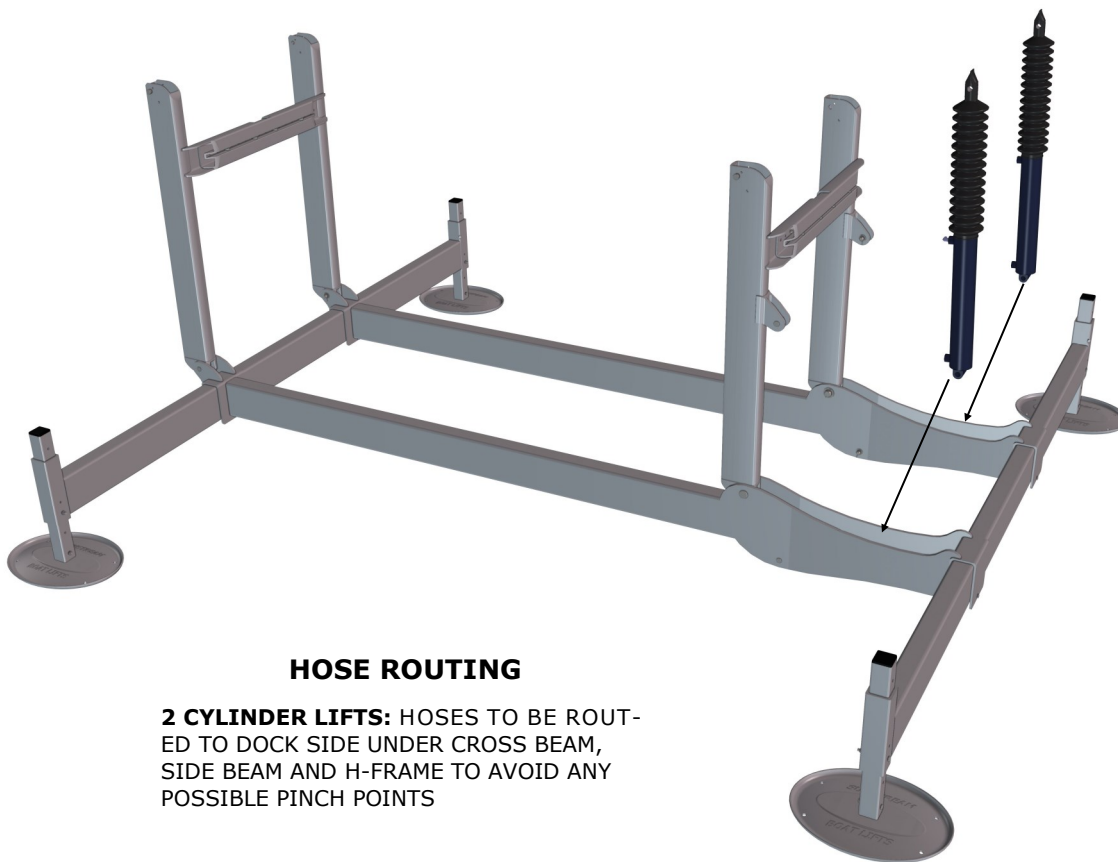
COTTER PIN 1.5"
PART: 14-000001-44



HEADED PIN .75" X 3.19"
PART: 141191

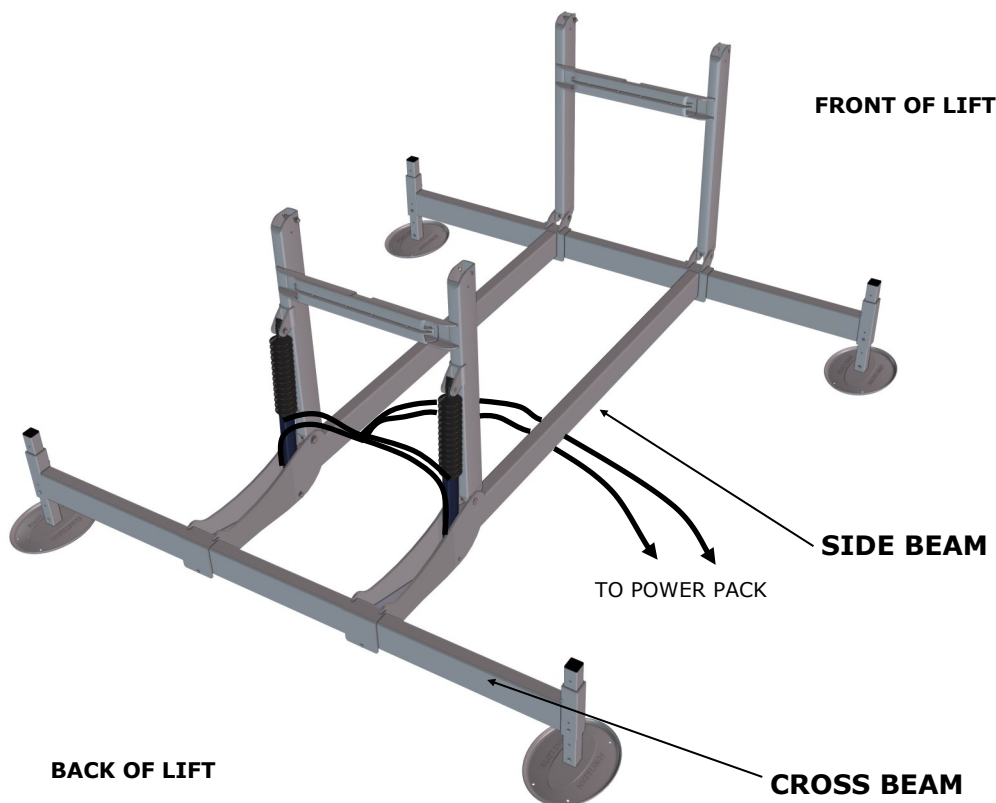


Step 7 continued

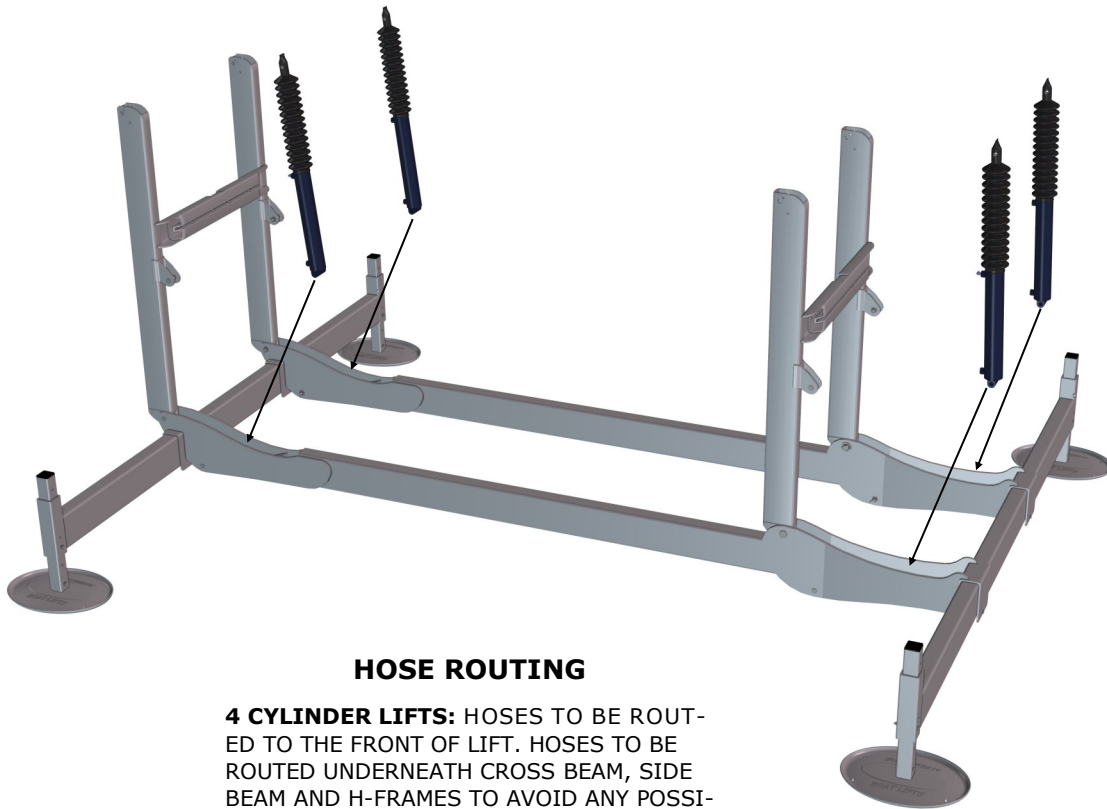


HOSE ROUTING

2 CYLINDER LIFTS: HOSES TO BE ROUTED TO DOCK SIDE UNDER CROSS BEAM, SIDE BEAM AND H-FRAME TO AVOID ANY POSSIBLE PINCH POINTS

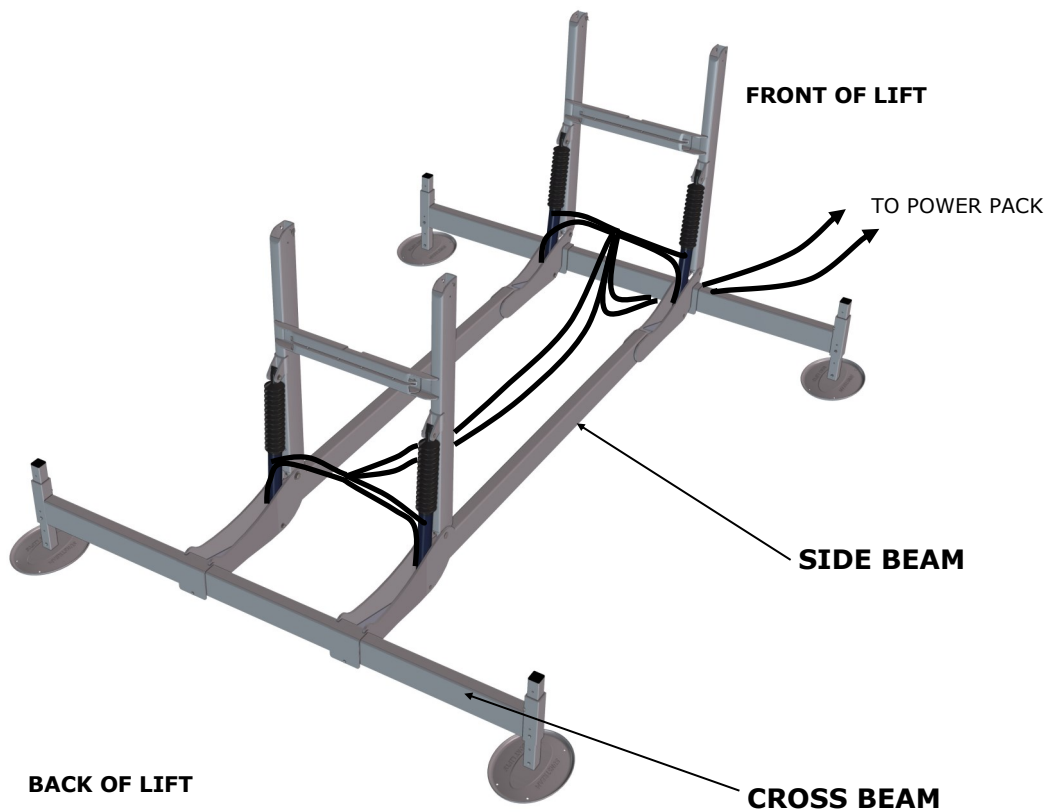


Step 7 continued

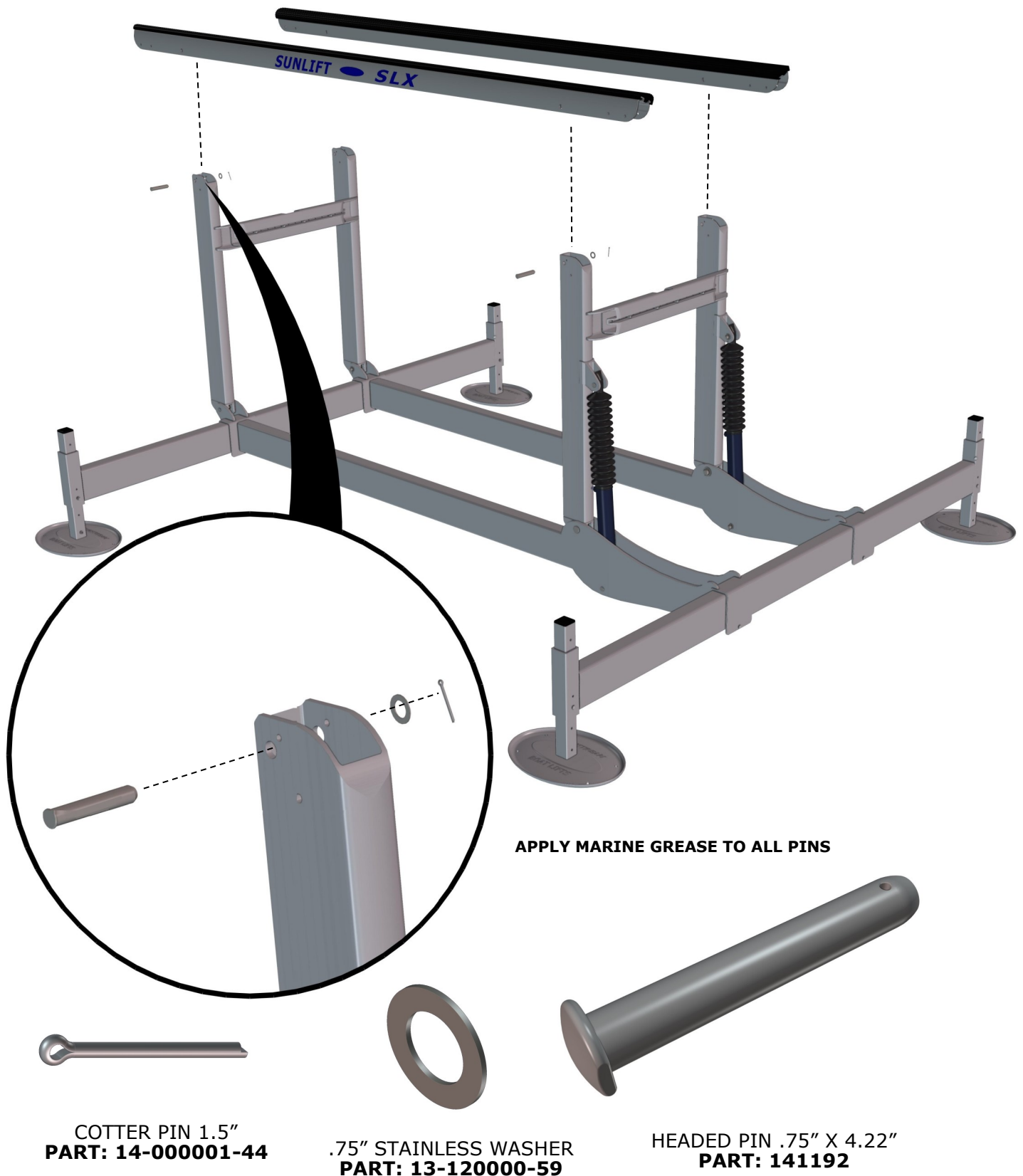


HOSE ROUTING

4 CYLINDER LIFTS: HOSES TO BE ROUTED TO THE FRONT OF LIFT. HOSES TO BE ROUTED UNDERNEATH CROSS BEAM, SIDE BEAM AND H-FRAMES TO AVOID ANY POSSIBLE PINCH POINTS.



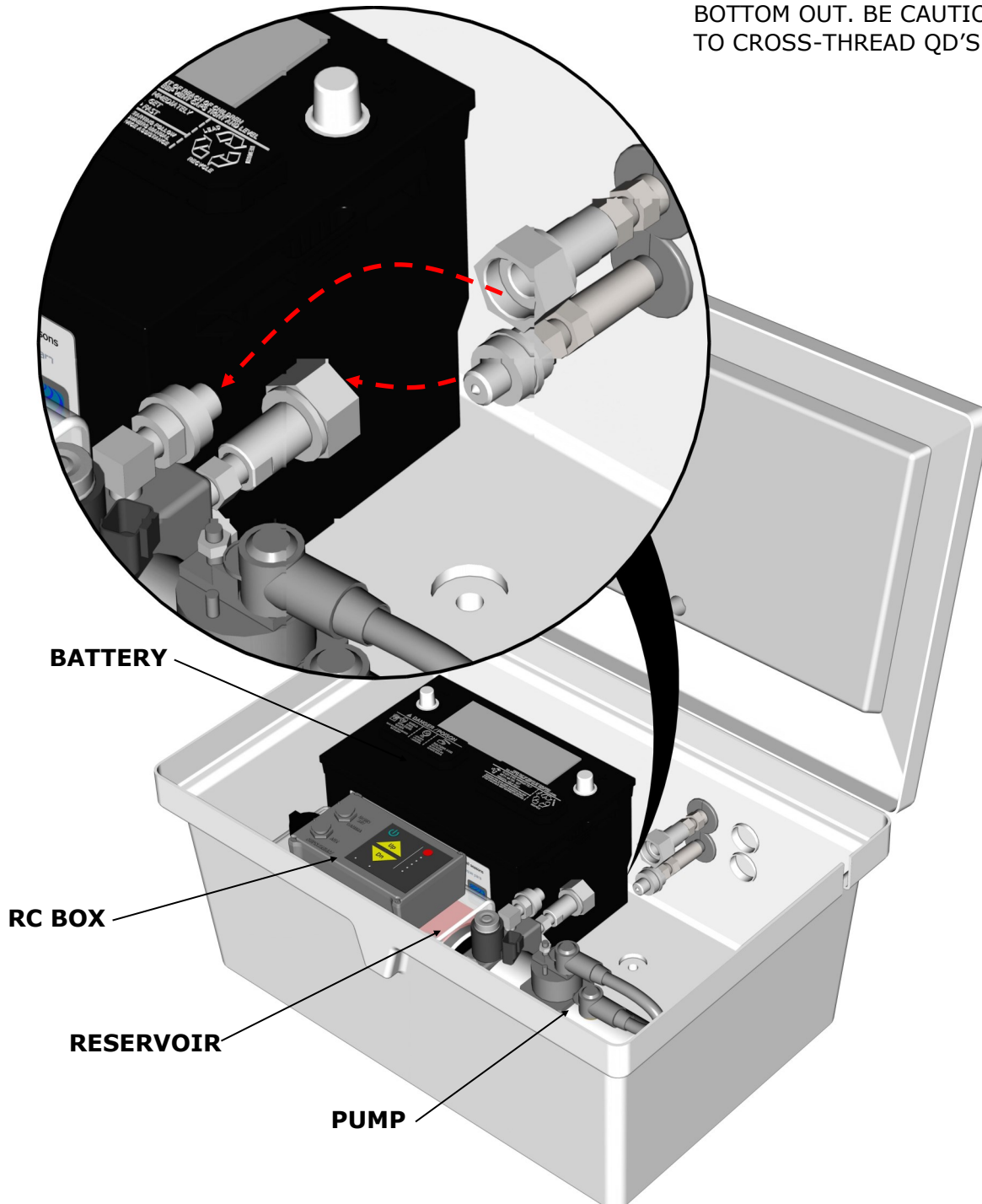
Step 8



Step 9

CONNECTING THE QD'S (QUICK DISCONNECTS)

NOTE: FOR PROPER CONNECTION, QD'S MUST BE TIGHTENED WITH A WRENCH UNTIL THEY BOTTOM OUT. BE CAUTIOUS NOT TO CROSS-THREAD QD'S.



Assembly

TIGHTEN ALL BOLTS & CHECK COTTER PINS



At this time you should verify that all cotter pins are properly bent to prevent removal, and check that all bolts (except leg bolts) are tight. Use caution not to over-tighten stainless fasteners.

ZINCS



To ward off corrosion in salt or brackish water, it is essential that “sacrificial” zinc (s) are installed and maintained on your lift. Zinc is used as it has a higher voltage in water so the current will be more inclined to flow from it. The zinc becomes the corroding anode, while the lift serves as the cathode and is protected from corrosion.

It is imperative that you replace the zinc on your lift regularly. Because many external factors affect the rate at which a zinc deteriorates, Sunstream recommends that you check its condition frequently, and change the zinc every six months or more often if needed. Zincs on lifts in coastal areas near the ocean deteriorate more rapidly and need to be changed more frequently. **Effects of galvanic corrosion are not covered by your Sunstream warranty. Not maintaining zincs on the lift constitutes lack of proper maintenance and voids the Sunstream warranty.**

Protect your investment with the proper steps. To complete the electrical circuit, the zincs must be connected to the lift. Sunstream would be pleased to provide zinc replacement services; simply call to schedule. If replacing your own, Sunstream recommends using high-quality zincs that are available through the Sunstream service department and your authorized dealer.

PREPARE HYDRAULIC SYSTEM

NOTICE

Use only Sunstream sunfluid, other hydraulic fluids could damage the hydraulic system.

Be sure to route the hydraulic hoses under the Side Beam to prevent pinching by the lift when operating. Insert the hoses through the holes in the side of the Power Pack box, and connect to the pump using the quick-connect fittings.



Important: If the quick-connect fittings are difficult to attach, then you should relieve some of the pressure in the system by pushing in on the tip of the male hose connector (try pressing the tip against a clean hard surface). **NOTE:** Use eye protection! Use caution not to damage fitting. This will release a small amount of fluid, which is O.K. Once the pressure has been released you should be able to connect both hoses. Remember that the hydraulic fluid in your SunLift is water-soluble and safe, and cleans up easily.



Lighting package only: If you installed the optional light bar on your lift, you should also route the light bar wire along with the hydraulic hoses to your Power Pack. Insert the wire through one of the holes in the side of the box, and plug in to the connectors marked ‘Lights’. Use the plastic zip ties provided to attach the wire to the hydraulic hoses.



Caution: Use care when working inside the PowerPack box and around the battery, just as you would around your car or boat battery. A battery can explode and cause harm.

Finally, verify that the system switch is located inside the Power Pack on the side of the electri-

PREPARE HYDRAULIC SYSTEM

is switched ‘on’. The on/off Power cal control box.

NOTICE

You are now ready to test your lift before you put it in the water! It is important that this be done for the first time without anything loaded on the lift.

NOTICE

Use the up/down switch inside the Power Pack to cycle the lift up and down. As you are doing this, pay close attention to the hydraulic hoses to see that they are not binding or being pinched by any part of the lift. Also, the lift should move up and down smoothly, without any undue stress or squeaking. If there is an excessive amount of squeaking or binding, check to see that all pivot pins are properly lubricated. After cycling the lift a couple of times, make one last inspection of the cotter pins and bolts to see that they are secure and tight. If applicable, also test the optional remote control and underwater lighting system. **Important:** Inspect all hoses carefully for leaks. Tighten leaky fittings if necessary. Do not over-tighten fittings.

Installation

⚠ DANGER The Maximum Capacity for the Lift should be listed on the lift itself - if it is not, call Sunstream immediately to determine your lift's capacity. Operating the Lift with a greater amount of total weight may cause the lift and boat to become unstable and/or capsize, possibly causing property damage and/or severe injury or death to individuals situated nearby.

⚠ DANGER Installation or use of the Lift in overly rigorous conditions may cause the Lift to become unstable and/or capsize, possibly causing property damage and/or severe injury or death to individuals situated nearby.

LAUNCH THE LIFT



Before launching, you must consider at what depth the lift should sit in order to best utilize the lifting height, especially if your water level fluctuates during the year. Typically, the front and rear crossbeams of your Sun Lift should be between 24" to 48" below the surface of the water for the SLX5010, SLX6512 SL8012 & SLX9012 And 30"-50" for the SLX10012 & SL12016. Attempt to maximize the lifting height, since over time wave action can damage the lift if the waves are contacting the boat.

NOTICE

If your water level fluctuates during the year:

Position the top of the Cross Beam 24" below the surface at the lowest water level. The SLX5010, SLX6512 SL8012 & SLX9012 with 48" of lifting height will allow for about 24" of water fluctuation. The SLX10012 & SL12016 Sun Lift with 60" of lifting height will allow for about 36" of water fluctuation.

NOTICE

If your water level does not fluctuate:

You can position the top of the cross beams anywhere between the 24" and 48" depth measurement, depending on how high you want your boat out of the water.

In preparation for launching the lift into the water, disconnect the hydraulic hoses (and optional light bar wire if applicable) from the Power Pack. Connect the hydraulic hoses to each other to protect the connectors and keep them clean during installation.

A. To launch your lift:

1. 'Float' the lift into position using flotation. In some cases, it may be necessary to employ a certified diver for this type of installation to make final underwater adjustments, and tighten all hardware. This is especially true if your leg lengths are 8 feet or longer, since deep water braces would be required. Check with your local dock builder or boatlift installer if you feel you need help. To perform this type of installation, you will need suitable flotation for the lift, which will hold it at the surface of the water while you position it and make final adjustments. We recommend a couple of 250 lb. Float bags. The flotation should be strapped tightly to the fore and aft 'H' frames of your lift.

If you have not already done so, insert the legs into the leg sleeves at all four corners, and attach the feet. Temporarily bolt the legs to their shallowest setting. The lift should be in the full down position prior to launching, and the hydraulic hoses disconnected from the Powerpack. Put the lift in the water, and float it to the approximate area where you would like it to sit. Note that if your legs are exceptionally long, it may be easier to insert them after the lift is placed in the water, as the entire structure will then be less cumbersome. Now remove the bolt holding each leg into position, and allow the leg to drop to the bottom. Bolt it into position using the nearest hole. Re-connect the hydraulic hoses to the Powerpack so you can use the power of the lift combined with the flotation of the barrels to level the lift (see next step).

After the braces are in place and all adjustments are complete, remove flotation.

Installation

LEVELING AND FINAL POSITION

NOTICE

A. Leveling the Sun Lift:

Once you have adjusted the lift in its final position, you must now ensure that it is level. To do this, use a suitable measuring device and measure the distance from the top of the Cross Beam to the water surface. The distance at each of the four corners

of the lift should be within 2 inches of each other. If they are not, you will have to adjust the leg (s) up or down accordingly. Note the two holes in the leg sleeve allow you to adjust the leg in 2" increments.

B. (optional) Attach deep water braces (for leg lengths 8 feet and up):

If you have legs over 7 feet long, you will be required to attach deep water braces to stabilize and strengthen the structure underneath the water. Refer to the Deep Water Brace Kit instructions for details. Note that once these braces are attached, the legs are not easily adjusted, so make sure you are finished leveling before attaching braces.



C. Double check at this time that all bolts and nuts are tightened. Also, if your area experiences high wind and waves, or if the underwater geography slopes to some degree where your lift sits, you may consider driving four 2 foot pieces of rebar (not provided) through the holes provided in the feet for added anchoring. **(Determine whether environmental or other laws prohibit or require a permit before penetrating the substrate.)**

D. For steep slope installations, pin down foot holes with 4 foot, 1/2 inch diameter rebar (not included).

LIFT YOUR BOAT

⚠ DANGER

Note that the weight of the boat on the lift for the first time may cause it to settle. Therefore, great care and precaution should be taken when lifting for the first few times until you are certain the lift is stabilized. Make sure everyone in the immediate area is aware during this process, and is not in close proximity to the lift (especially not in the water near the lift!)

NOTICE

Position the boat by *hand* over the bunks with the transom about even or 12" - 18" behind the back of the bunk. Carefully bring the lift up until the bunks 'capture' the boat. If so, continue bringing the boat out of the water until it is about 1 foot above the surface. Stop the lift again and check the stability of the lift, particularly to see that it is remaining fairly level and will not topple over. Finally, continue lifting the boat while paying close attention to the positioning of the lift until it is in the full upright and over-center position.



Remove the boat from the lift. Check to see that the lift is still level. If not, the leg(s) will need to be adjusted again accordingly. Two weeks after the installation, check to see that the lift is level as it may have settled over time. Adjust as needed. Inspect the lift level periodically as needed.

Use and Maintenance

Sunstream recommends an annual inspection of the SunLift by an authorized Sunstream Dealer or other qualified person.



For storage and off-season suggestions be sure to prevent rainwater from accumulating in your boat if you plan to leave it on the lift for long term storage. Rainwater accumulating in your bilge can quickly increase your gross weight over the lift capacity.

1. At all times, make sure that you adjust the height of the lift to limit wave action against the hull. Wave action will damage the lift and can take the boat off the lift.
2. We recommend disconnecting the Powerpack and storing it indoors for the winter if you are not planning on using the lift for prolonged periods. To do this, simply disconnect the hoses from your Powerpack by using the Quick Disconnects and connect the hoses together. This will ensure that threads and seals remain clean.
Tip: If you have problems disconnecting the hoses from the Powerpack, use the depressurize feature on the RC. to relieve the pressure. Do not disconnect the hoses when lift is pressured against the upper or lower stops.
3. Booster-charge your battery using a 10A charger at the beginning and end of the season. A mid-season boost may be required for heavy use.
4. If your waterway freezes during the winter, you will need to remove your Sun Lift, as it will be damaged by ice flow.
5. When storing the boat, the lift must be in the upright over center gravity lock position for maximum safety. The over-center position will prevent the boat from lowering if you experience a hydraulics leak.
6. Your Sun Lift can be left in any position when not in use. Although we do recommend leaving the lift in the up position to prevent the bunks from becoming 'slimy', and to avoid creating a hidden underwater obstruction.

Battery Tips

Recommended Battery. Use a 12V group 27 marine deep-cycle battery with a minimum reserve capacity of 160Ah (Amp hours). Reserve capacity is the most important feature.

Battery Capacity: The SunLift was tested to have a energy capacity of approximately 20 full cycles using a new battery with a reserve capacity of 160 Ah. However, try not to dip below 50% battery capacity, since the solar panel would have difficulty in recovering from such a deep draw.

Solar Charging rate: The following values are limits on full cycles (down and up) to keep battery capacity at steady state condition. The capacity of the battery will allow for additional cycles for any particular month. Table assumes all-day exposure with typical seasonal weather.

Max. Monthly Full Lifting Cycles (Down and Up) using a single solar panel (keeping steady state energy level)		
Month	Seattle (a northern cloudy city)	San Diego (A sunny southern city)
Jan	2 cycles	27 cycles
Feb	8	29
Mar	14	29
Apr	18	31
May	21	27
Jun	22	25
Jul	24	28
Aug	24	31
Sep	19	29
Oct	12	29
Nov	4	28
Dec	1	25

If your solar panel does not keep the battery charged try any of these options:

- Move your solar panel to an area with less obstructed sunlight.
- Add a second solar panel, or add an a/c charger.
- Booster charge your battery mid-season.
- Check cell water levels in battery. Top up if necessary with distilled water.

RC401 Remote Control instructions

RC401 Basic Instructions

Note: Exit 'PROGRAM MODE' to operate the lift.

Add Transmitter: Press and release the Red 'Program' button once so the 'Add Transmitter' light flashes, then press 'Up' on the transmitter three (3) times.

Clear Memory: Press and hold 'PROGRAM' button for 15 seconds.

Security Mode: This mode disables the keypad on the controller. To turn on the Security Mode, press 'PROGRAM' twice to scroll to 'Security'. Enter the security code and press 'PROGRAM' (combination of 1, 2 and 3). The 'Security' light will remain lit when the keypad is disabled. To enable the keypad, enter the correct security code and press 'PROGRAM'.

Depressurize: This feature depressurizes the hydraulics on SunLift™ and some FloatLift™ models for hose removal. Press 'PROGRAM' three (3) times to scroll to 'DEPRESSURIZE'. Press 'Up' then 'Dn' on the keypad or the transmitter key FOB.

Installation Instructions (if not installed by factory)

The RC401 is compatible for lifts that use the previous RC306, RC308, RC400 and RC400B. However, the transmitters used with RC306 are not interchangeable with the others.

1. Connect the RC401 to the 6-pin connector of the hydraulic pump wire harness. LA-RCX12 wire extension is available.*
 2. Attach the RC401 to the reservoir of the hydraulic pump with the included Velcro strips. (For metal Powerpack boxes, attach to inside of Powerpack box).
 3. Position the antenna away from the electric motor of the hydraulic pump. (For metal Powerpack boxes, or if Powerpack is located in a metal enclosure, extension antenna LA-RCA1 is required).
- A 12 inch 6-pin extension wire harness is available (LA-RCX12) if existing pump wire harness is too short (for example: Dual Mini). If a small amount of extension is needed, the existing wire harness can be adjusted by rerouting the wires and trimming the existing wire shrink wrap.

Battery Monitoring

The 'Battery Fault' indicator lights when the battery voltage is low. Charge the battery with an AC charger if the 'Battery Fault' light is on. Solar panels will not charge a dead battery.

Lights Plug

Optional underwater or Dock LED lights are available for SunLifts™ and FloatLifts™ (LA-LP1), and are connected directly to the 'LIGHTS' plug on the side of the RC401. The lights are controlled with the 'LIGHT' button on the transmitter and are latched on for 5 minutes or may be toggled 'Off' by pressing the 'Light' button again. Do not exceed 5A (protected by the auto-resetting circuit).

Security Mode

The keypad can be locked to prevent tampering with the lift. The transmitter still functions in Security Mode. The factory setting of the security code is 1223, but this may be changed.

The keypad has only numbers 1, 2 and 3 which are selected by pressing 'Power', 'Up' or 'Down' respectively.

To Enable Security Mode:

- Press the 'Program' button twice (to 'Security'). Enter security code (factory setting 1223 or your custom code) and press 'Program'.
- Turn Security Mode 'Off' by entering the security code and pressing the 'Program' button.

To Customize your Security Code:

- Press 'Program' twice (to 'Security'), then press and hold 'Program' for about five (5) seconds until the Program light flashes in a 2-flash pattern.
- Enter the old security code and press 'Program'. Light will flash in a 3-flash pattern.
- Enter the new security code and press 'Program'. Light will flash in a 4-flash pattern.
- Enter the new security code again and press 'Program'. New code is programmed. Record your new security code in a secure place. Your dealer can reset your code back to factory settings if needed.

Troubleshooting the RC401

Issue:	Solution:
No 'Power' light and lift does not operate with keypad or transmitter	<ul style="list-style-type: none">-Check battery connection-Press Power Button on control box-Check fuse in hydraulic pump wire harness-Check battery voltage Voltage should be 12VDC or higher
No lift operation with transmitter, but works with keypad on control box	<ul style="list-style-type: none">-If 'Battery Fault' on controller, charge battery-Enroll transmitter using 'Add Transmitter' instructions-Verify Power light is on (see No 'Power' light solutions above)-Replace battery in transmitter
Lift does not operate with keypad but does with transmitter	<ul style="list-style-type: none">- If 'Security' light is on, keypad is locked with Security Mode. See Security Mode instructions
Battery drains in Solar mode	<ul style="list-style-type: none">-Verify lift is not being overused for the number of solar panels connected-Verify sun has direct contact with solar panel for maximum number of hours-Clean solar panel
Transmitter has limited range	<ul style="list-style-type: none">-Reposition antenna away from electric motor or any metal inside box-Try touching transmitter to your chin while operating (yes, it works!)-Add LA-RCA1 extension antenna

Troubleshooting the SunLift SLX

Problem	Possible Solution(s)
Lift does not operate with manual switch on RC box	<ul style="list-style-type: none"> – Check power on RC box is on – Check battery voltage – Check all wires are connected to Solenoids on pump
Lift does not operate with key fob transmitter buttons.	<ul style="list-style-type: none"> – Check that lift operates with manual switches on RC box (see above) – Re-program key fob transmitter per instructions in RC manual – Check battery voltage in key fob transmitter
Key fob transmitter has limited range	<ul style="list-style-type: none"> – Check battery voltage in key fob transmitter – Hold transmitter in different location (over head, or different location in boat) – Proximity to cell phone towers, power lines and other electromagnetic interference can also reduce range.
Battery does not keep a charge	<ul style="list-style-type: none"> – Check battery fluid level – Verify charger and/or solar connector properly plugged in – Verify solar panel getting direct sun light
Cannot or difficult to connect hoses	<ul style="list-style-type: none"> – Depressurize system via RC box – Use wrench to connect QD's – Check for any debris in hose threads
Fluid found in bottom of Power Pack	<ul style="list-style-type: none"> – On a new lift, sometimes air in the system expands and causes fluid to overflow – Check fluid level after installation is complete and all air is purged from system – Check for leaks. Tighten hose fittings or gaskets as necessary.
Battery terminal becomes hot	<ul style="list-style-type: none"> – Check battery cable and terminals are clean and tight on battery terminal
	–
	–
	–

Disclaimer of Liability

These assembly and installation instructions have been provided by Sunstream Corporation at the request of the potential installer and/or assembler. If you are not an authorized Sunstream Dealer and are not a reasonably skilled mechanic, please contact Sunstream so that we can refer you to a local dealer who can skillfully and safely perform the assembly and installation of your Sunstream boat lift.

It is the potential installer and/or assembler's responsibility to determine whether he or she has the necessary skills, knowledge, and tools to properly and safely assemble and/or install the Sunstream Lift described herein. Improper assembly and/or installation may cause the lift to function improperly or not to function. Improper assembly and/or installation may additionally cause a risk to personal safety or property. If the assembler and/or installer is confused or has questions or concerns about a particular assembly or installation, he or she should contact Sunstream by telephone at (253)-395-0500, Int'l (001)-(253)-395-0500 before proceeding further. The information contained in these instructions does not constitute a warranty or guarantee of any kind.

An assembler's and/or installer's failure to correctly follow these assembly and installation instructions constitutes a waiver of the assembler and/or installer's rights against Sunstream regarding any subsequent damages to property or personal injury caused by the assembler's and/or installer's improper assembly and/or installation.

Many boats today require specific bunk/support configurations; Multi-hull boats, including but not limited to pontoon, tritoon, some V-hull and catamaran style boats often require specific bunk configurations to properly support the boat on a boatlift.

In some cases boat hull material and strake layout also may require "a custom engineered" bunk configuration. Any boat on a Sunstream lift should be supported per boat manufacturer recommendations.

Contact the boat manufacturer to verify how to support the boat. Sunstream is not responsible for determining the proper way to support each craft that may go on a Sunstream lift. Inadequate support or incorrect position of a boat on a Sunstream lift may result in damage to the boat. Sunstream does not warrant that any bunk/kit configuration will support the hull/sponsons as the boat manufacturer intends or requires.

Safety

IMPORTANT SAFETY INSTRUCTIONS

If you have any questions, please call your dealer, or Sunstream

Save These Instructions

Your safety and the safety of others is very important. Proper use of the information in this manual will help avoid potential hazards that could cause damage to property and/or personal injury. It is not possible, however, to identify and warn users of all hazards associated with the assembly, installation, operation, and maintenance of the SunLift. You must use your own good judgment.



-Will result in serious injury or death.



-Could result in serious injury or death.



-Could result in minor or moderate injury.

NOTICE

-Not related to personal injury



Important - suggested emphasis



Failure to comply with the following rules may result in severe injury and/or death and damage to property. Misuse of your lift may cause the lift and boat to become unstable.

Your Sun Lift is a piece of heavy equipment and the act of raising your boat should be treated with respect and good judgment. Children should not operate lift without adult supervision.

No one should operate the lift without fully understanding the proper operating procedures.

NEVER exceed the maximum capacity of the lift. Overloading may result in mechanical failure and personal injury. Positioning the boat too far forward or aft may overload the lift.

Your lift is not designed to be an elevator for people. Therefore, do not use the lift for moving or supporting humans. Load and Unload passengers only when boat is floating.

Restrict children and adults from playing on or near the Sun Lift.

NEVER go under your boat when the lift is in the raised position. Also, your lift is not design to be a maintenance platform. Service and maintenance work on your boat should be performed at a proper marine facility, and not while on your Sun Lift.

The Maximum Capacity for the Lift should be listed on the lift itself - if it is not, call Sunstream immediately to determine your lifts capacity. Operating the Lift with a greater amount of total weight may cause the lift and boat to become unstable and/or capsize, possibly causing property damage and/or and severe injury or death to individuals situated nearby.

Installation or use of the Lift in overly rigorous conditions may cause the Lift to become unstable and/or capsize, possibly causing property damage and/or severe injury or death to individuals situated nearby.

Safety



It is safest to leave the boat in the over-center position.

Be sure the Sun Lift remains level at all four corners. Out of level installations may cause lift failure and personal injury. All four corners must be within 2" of each other.

If a Sun Lift is located near an area where swimmers are prone to diving into the water (such as off of a boathouse), make sure they are aware of the location of the Sun Lift when boat is not present, and lift is hidden under water.



Do not use your Powerpack for storage purposes. Articles or tools in the box could cause damage to the pump or electrical system..

Note that the weight of the boat on the lift for the first time may cause it to settle. Therefore, great care and precaution should be taken when lifting for the first few times until you are certain the lift is stabilized. Make sure everyone in the immediate area is aware during this process, and is not in close proximity to the lift (especially not in the water near the lift!)

The Catwalk accessory is not designed to hold people. Do not stand or walk on the catwalk.

NOTICE

Do not disconnect quick-disconnect hydraulics with a boat loaded on the lift nor in the over-center position. It is difficult to re-attach the hoses if the hoses are pressurized.

Do not power boat on lift. Lower lift so boat glides into position. Boat must be in neutral to minimize risk to propeller. Lift is not designed to react to loads from boat engine (s).

Safety tip: Use your remote control to raise bunks out of the water after departing, therefore allowing swimmers to see location of lift.

Warranty

WARRANTY:

Sunstream Corporation® ("Company") warrants its Products for non-commercial and/or non-governmental use for a period of three (3)* years, in both fresh and salt water, to the original Purchaser ("Purchaser") against manufacturing defects in all Product materials and workmanship beginning from date of purchase of the Product from Company** under the following terms and conditions:

NOTICE REQUIREMENTS AND REMEDIES: If the Purchaser discovers a defect, the Company, or its authorized Company dealer or agent, will, at the Company's option: (1) repair the Product, (2) replace the defective part, or (3) refund the purchase price of the Product upon confirmation by Company that the Product is defective, provided that the Company receives notice of the defect from the Purchaser or Company dealer before the warranty period lapses. Product changes caused by age or environment (such as marine growth or heat) shall not constitute a defect. Confirmation of the defect shall require that reasonable proof of the defect be provided by Purchaser to Company or Company dealer, and may include that the Product or part be returned to Company for inspection at Purchaser's initial expense. This warranty shall not apply if Company receives notification after the before-stated deadline, regardless of when the defect occurred or was discovered, and regardless of the reason for the delay in notification. "Notification" shall be deemed to have occurred when the Purchaser or Company dealer sends written notice to Company by fax or by e-mail and when receipt is confirmed by Company's response.

EXCLUSIONS: This warranty does not apply to damages caused by or due to: (1) accident (including, without limitation, collision, fire, flood, wind, ice or any other natural disaster or acts of God), abuse, misuse, overloading, out of level or improper boat loading (i.e.: not fully on, too far on, or crooked on lift), or (2) faulty assembly or installation if such assembly or installation was not performed by a Company employee or Company dealer. Company is not responsible for determining the weight or dimensions of Purchaser's boat, and Purchaser is advised that published boat specifications are often inaccurate. This warranty does not apply to wear and damage of boat covers, which includes wear from contact with boat, hardware, and accessories, damage from cover catching on boat or SwiftShield frame, and damage from incorrect boat position on lift. Purchaser is responsible for confirming cover does not catch or hang on boat or structure every time boat cover is covered or uncovered. This warranty is void if the Product has been modified without the permission of the Company or if any Company serial number has been removed or defaced. Normal maintenance requires an annual inspection of the Product by a Company employee or Company dealer, including bolts, pins, hydraulics, pump, electronics, and welds and failure to undertake such maintenance may constitute "abuse." Lift components' fluid level and condition, including battery water and acid, SunFluid and strainer cleaning are maintenance items and are not covered by this warranty. Zincs, ropes, batteries, cosmetic concerns and custom coatings are not covered by this warranty. Batteries supplied by Company that are maintained in top operating condition by Purchaser are warranted for a period of one (1) year. Underwater light systems and the **Dock-Jock** are not warranted for use in brackish or salt water. This warranty does not void or alter any rights the Purchaser may have against dealers or suppliers of component parts.

Warranty

(Continued)

SALT WATER REQUIREMENTS AND EXCLUSIONS: If any Company Product is used in brackish or salt water, the Purchaser agrees that proper maintenance requires that the Purchaser shall attach to the product, maintain and regularly check sacrificial anodes, also known as "zincs," in order to prevent electrolysis from damaging the lift metals, and that failure to attach and maintain the zincs constitutes "abuse." *** Underwater light systems and the Dock Jock™ personal watercraft lifts are not warranted for brackish or salt water use regardless of zinc use.*

INTERNATIONAL WARRANTY: The Purchaser agrees that if the Product leaves the borders of the United States of America, Puerto Rico or Canada, replacement parts shall be shipped with the dealer's next container order. International dealers have the option of using parts from stocked product if possible to expedite response. Purchaser has the option to pay for expedited freight if desired.

LIMITATIONS: Except as expressly stated herein, there are no warranties, expressed or implied, by operation of law or otherwise, of the Product furnished under this Agreement. Seller disclaims any implied warranty of merchantability or fitness for a particular purpose. The sole remedy for liability of any kind shall be limited to the remedies provided in this warranty and shall in no event include any incidental, indirect, special or consequential damages or loss of use, revenue or profit. State law may override the above exceptions or limitations.

* Fresh water applications for underwater light systems and the Dock Jock™ winch and strap are warranted for one (1) year; salt water applications are not warranted for these Products.

** If the Product is purchased from a Company dealer, the warranty term begins upon the date the Product is sold to the end Purchaser or three (3) months from the date the Product is shipped from Company, whichever occurs first.

*** Under normal conditions, zincs should last at least one (1) year. If Purchaser observes that the zincs are deteriorating in a shorter time period, an external current could be entering the system and the Purchaser must find the source of this current and stop it, or change zincs more frequently.

Sunstream Corporation®

22149 68th Avenue South

Kent, WA 98032

USA

Web Site: www.sunstreamcorp.com

E-mail: warranty@sunstreamcorp.com

Phone: 1-253-395-0500

Fax: 1-253-395-0501

001-253-395-0500 (Int'l)

001-253-395-0501 (Int'l)